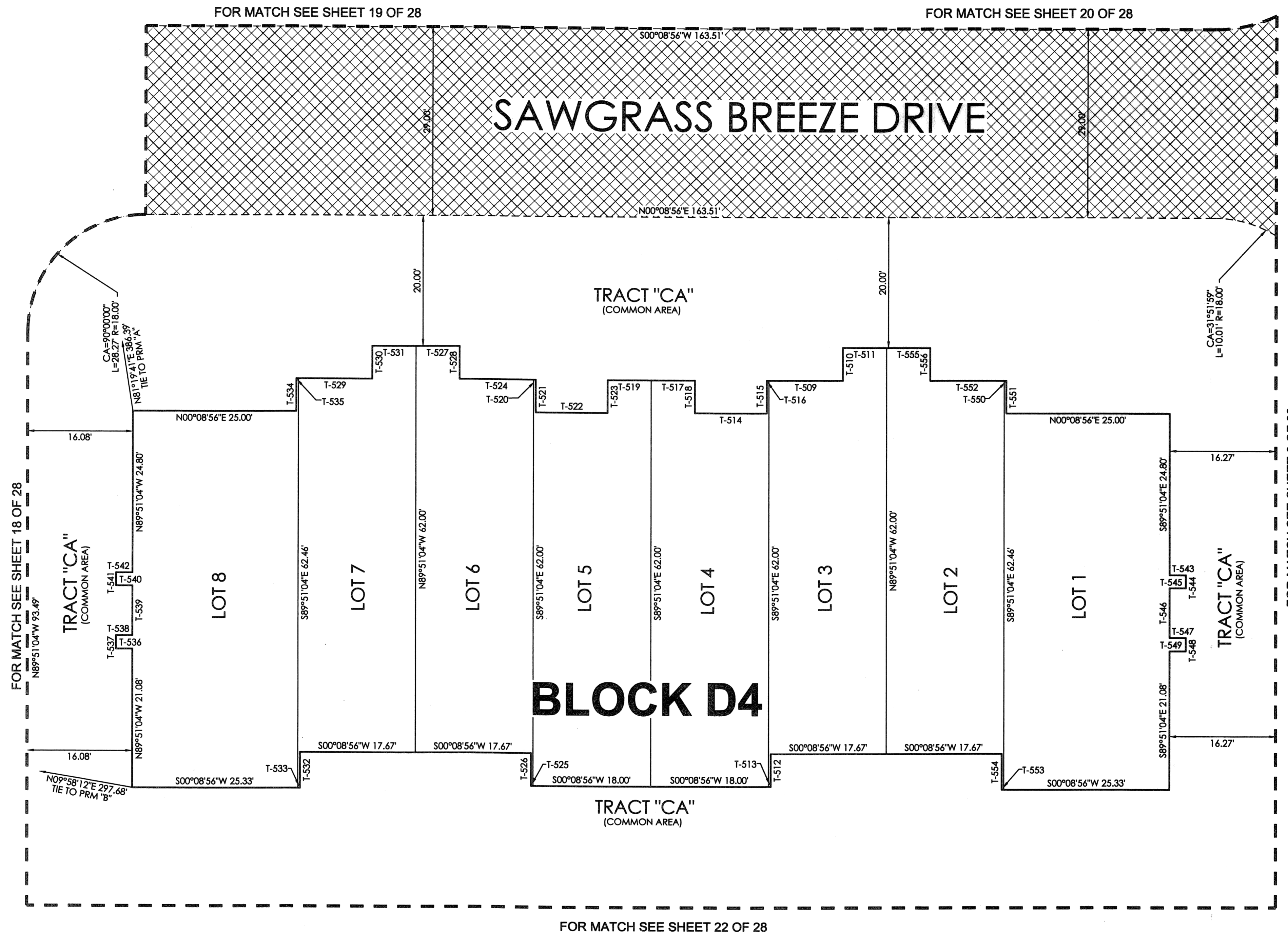
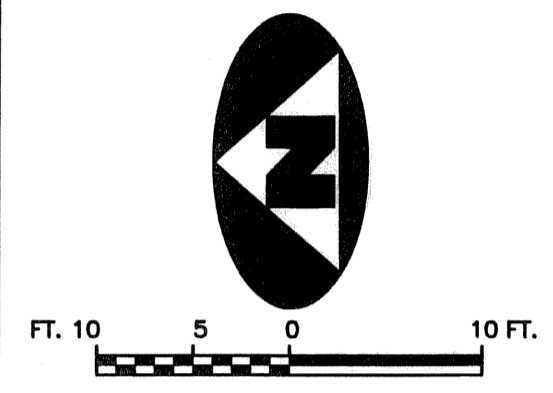


CIELO TOWNHOMES AT THE SHOPS OF DONALD ROSS

BEING A REPLAT OF TRACT "R", THE SHOPS OF DONALD ROSS REPLAT OF TRACT "A", RECORDED IN PLAT BOOK 103, PAGE 142, PUBLIC RECORDS, PALM BEACH COUNTY, FLORIDA AND LYING IN THE NORTHWEST ONE-QUARTER OF SECTION 25, TOWNSHIP 41 SOUTH, RANGE 42 EAST, CITY OF PALM BEACH GARDENS, PALM BEACH COUNTY, FLORIDA.

177



TANGENT TABLE

T-509	N00°08'56"E 11.33'
T-510	N89°51'04"W 5.00'
T-511	N00°08'56"E 6.67'
T-512	S89°51'04"W 5.00'
T-513	S00°08'56"W 0.33'
T-514	N00°08'56"E 11.00'
T-515	N89°51'04"W 5.00'
T-516	N00°08'56"E 0.33'
T-517	N00°08'56"E 6.67'
T-518	S89°51'04"W 5.00'
T-519	N00°08'56"E 6.67'
T-520	N00°08'56"E 0.33'
T-521	S89°51'04"W 5.00'
T-522	N00°08'56"E 11.00'
T-523	N89°51'04"W 5.00'
T-524	N00°08'56"E 11.33'
T-525	S00°08'56"W 0.33'
T-526	N89°51'04"W 5.00'
T-527	N00°08'56"E 6.67'
T-528	S89°51'04"W 5.00'
T-529	N00°08'56"E 11.33'
T-530	N89°51'04"W 5.00'
T-531	N00°08'56"E 6.67'
T-532	S89°51'04"W 5.46'
T-533	S00°08'56"W 0.33'
T-534	N89°51'04"W 5.00'
T-535	N00°08'56"E 0.33'
T-536	S00°08'56"W 2.50'
T-537	N89°51'04"W 2.00'
T-538	N00°08'56"E 2.50'
T-539	N89°51'04"W 7.58'
T-540	S00°08'56"W 2.50'
T-541	N89°51'04"W 2.00'
T-542	N00°08'56"E 2.50'
T-543	N00°08'56"E 2.50'
T-544	S89°51'04"E 2.00'
T-545	S00°08'56"W 2.50'
T-546	S89°51'04"E 7.58'
T-547	N00°08'56"E 2.50'
T-548	S89°51'04"E 2.00'
T-549	S00°08'56"W 2.50'
T-550	N00°08'56"E 0.33'
T-551	S89°51'04"E 5.00'
T-552	N00°08'56"E 11.33'
T-553	S00°08'56"W 0.33'
T-554	N89°51'04"W 5.46'
T-555	N00°08'56"E 6.67'
T-556	S89°51'04"E 5.00'

LEGEND

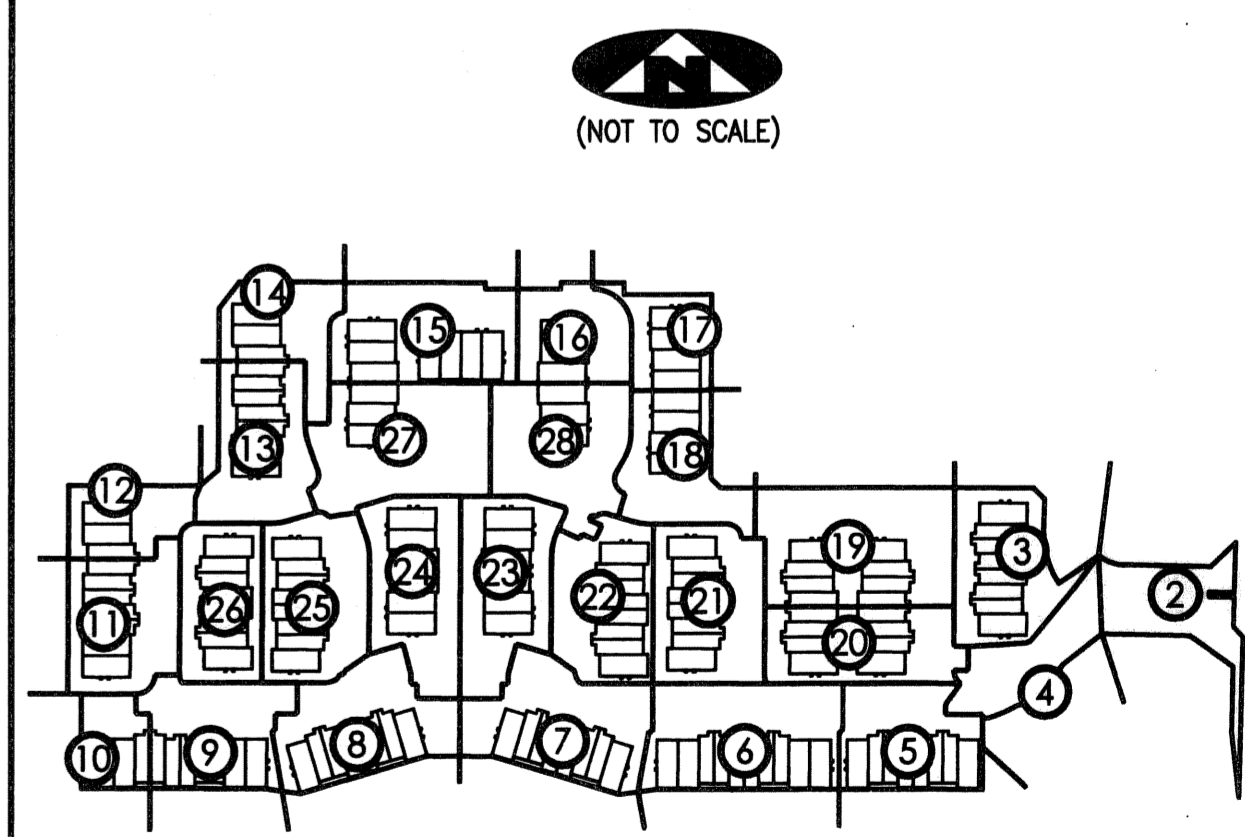
(R) DENOTES A RADIAL LINE	R DENOTES RADIUS DISTANCE	⊙ DENOTES A SET PERMANENT CONTROL POINT (LB 7344)	□ DENOTES A SET PERMANENT REFERENCE MONUMENT (LB 7344)
C/L DENOTES A CENTERLINE	L DENOTES ARC LENGTH DISTANCE	■ DENOTES A FOUND PERMANENT REFERENCE MONUMENT (LB 2171)	
DE DENOTES DRAINAGE EASEMENT	CA DENOTES CENTRAL ANGLE		
SUA DENOTES SEACOAST UTILITY AUTHORITY EASEMENT	LCB DENOTES LONG CHORD BEARING		
LS DENOTES LIFT STATION EASEMENT	CD DENOTES CHORD DISTANCE		
EAE DENOTES EMERGENCY ACCESS EASEMENT	ORB DENOTES OFFICIAL RECORDS BOOK EASEMENT (ORB 17773, PAGE 468)	▨ DENOTES A SEACOAST UTILITY EASEMENT (ORB 17773, PAGE 468)	▩ DENOTES AN INGRESS, EGRESS, DRAINAGE AND UTILITY EASEMENT (PB 103, PAGE 142)
	PB DENOTES PLAT BOOK		

SURVEYOR'S NOTES

1. THE BASE BEARING, AS SHOWN HEREON, IS S01°22'09"W ALONG THE EAST LINE OF TRACT "R", THE SHOPS OF DONALD ROSS REPLAT OF TRACT "A", RECORDED IN PLAT BOOK 103, PAGE 142.
2. IN THOSE INSTANCES WHERE UTILITY OR DRAINAGE STRUCTURES ARE CONSTRUCTED IN CONFLICT WITH THE PLATTED PERMANENT CONTROL POINT POSITION, STRADDLERS MONUMENTED AS PERMANENT CONTROL POINTS WILL BE SET TO REFERENCE THE PLATTED POSITION.
3. LINES THAT INTERSECT CURVES ARE NOT RADIAL UNLESS OTHERWISE NOTED.
4. THIS INSTRUMENT WAS PREPARED BY WM. R. VAN CAMPEN, P.S.M. NO. 2424, IN AND FOR THE OFFICES OF ASSOCIATED LAND SURVEYORS, INC., 4152 WEST BLUE HERON BOULEVARD, SUITE 121, RIVIERA BEACH, FLORIDA, 33404.

FILE: CIELOPLOT	
FB:	WO.NO.: P238
SCALE: 1"=10'	DATE: 12/25/2004
DWN: KVC	SHEET 21 OF 28

SHEET INDEX



① = DENOTES SHEET NUMBER OF 28

ASSOCIATED LAND SURVEYORS, INC.
 4152 W. BLUE HERON BOULEVARD—SUITE 121
 RIVIERA BEACH FLORIDA 33404 LB NO. 7344
 PHONE: (561) 848-2102 FAX: (561) 844-9659 EMAIL: ALSURVEY@AOL.COM